

remember...  
user stories means **card**,  
**conversation**, **confirmation**

**user stories**

As a Geophysicist, I want to transfer measurement data between ProductA and ProductB so that I can analyze it.

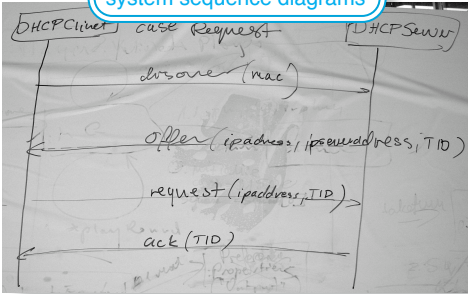
Contribution? (1) Simplicity, (2) reduced wastes of overprocessing and WIP inventory, (3) emphasizes collaboration and conversation, and (4) encourages acceptance test-driven development.

Contribution? (1) Improve the understanding and agreement of acceptance between the Product Owner, teams, and other stakeholders, and (2) move from "mini-waterfalls" to concurrent engineering.

**acceptance TDD**

TC	Actual	IN	TIME (min)	REPAIR OR	OUT	SUP
1	MODIFY	400	NEW MML	NEW MML	NEW MML	NEW MML
2	MODIFY	403	NEW MML	NEW MML	NEW MML	NEW MML
3	MODIFY	402	NEW MML	NEW MML	NEW MML	NEW MML
4?	MODIFY	457	NEW MML	NEW MML	NEW MML	NEW MML
5	MODIFY	420	NEW MML	NEW MML	NEW MML	NEW MML

**system sequence diagrams**



What are the system operations in a scenario?